

AFMFOREST Proven performance



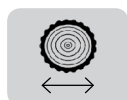
AFM 45 White Line

AFM 45 White Line

AFM 45 is effective harvesting head for thinning and final felling done with small and medium-sized forest machines. An exact delimbing is made with four knives and a non-sliding four motor feeding. Tree handling capacity is optimized for small and middle sized stems. AFM 45 is equipped with powerful hydraulics and the automatic chain tensioning to ensure the efficient felling and cutting in all conditions. Accurate measuring is ensured by a hydraulic length measuring device and front knife diameter measuring. AFM 45 is optionally fitted with multi tree equipment for integrated logging.



from. 965 kg



Opt. 5-40 cm



Opt. 0,2-0,6 m3



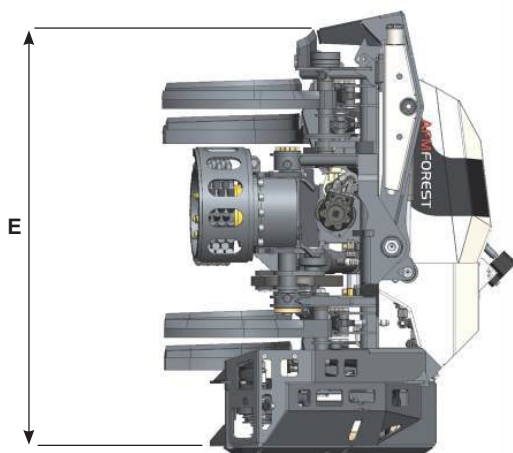
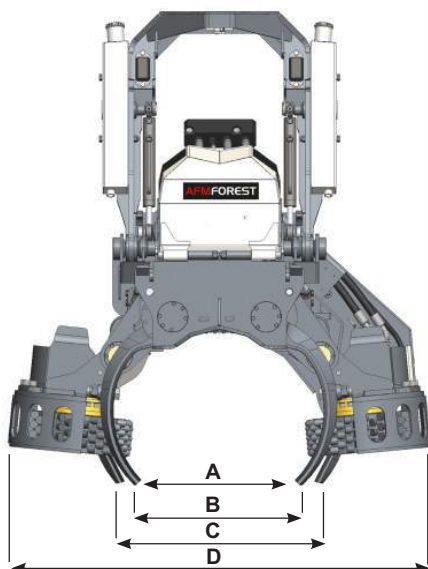
67-75 cm



12-18 ton

Technical Specifications

AFM 45 White Line



Dimensions

A. opening of front knives (mm), max	495
B. opening of rollers (mm), max	550
C. opening of back knives (mm) max	610
D. width (mm), max	1360
E. length (mm), max	1410

Felling and cross cutting

Felling diameter (cm), max	65
cross cutting diameter (cm), max	58
cutting mechanism	chain saw
saw output (kW)	45
chain speed (m/s)	42
chain type	.404"
saw bar length (cm), max	75
chain tensioning	hydraulic
lubrication oil tank (ltr)	6

Delimbing

Delimbing knives	6
moving knives	4
fixed knives	2
delimbing diameter (cm)	4-40

Feeding

feeding unit	4 motors - 3 rollers
feeding speed (m/s)	5,5
feeding power (kN)	18-22

Measuring

length	wheel/hydraulic control
diameter	from front knives
system	Motomit IT/PC, Logger

Hydraulics

working pressure (bar), max	260
-----------------------------	-----

Base machine

type	forest machine
weight (t)	9-16
engine power (kW)	60
hydraulic flow (l/min), min	180

Options

Colours coding
Stump spray
MTH arms

Your AFM-dealer:

AFMFOREST

HAKKUTIE 3
40320 JYVÄSKYLÄ
FINLAND

Tel. +358 20 765 9050
sales@afm-forest.fi
www.afm-forest.fi

AFM reserves the rights to amend this information at any time without notice.